

2015

## Utility of telepathology as a consultation tool between an off-site surgical pathology suite and affiliated hospitals in the frozen section diagnosis of lung neoplasms

T. Vitkovski  
*Northwell Health*

T. Bhuiya  
*Hofstra Northwell School of Medicine*

M. Esposito  
*Hofstra Northwell School of Medicine*

Follow this and additional works at: <https://academicworks.medicine.hofstra.edu/publications>

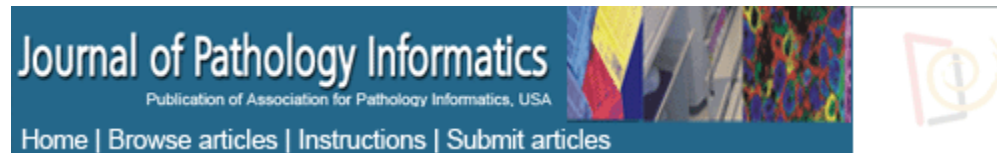
 Part of the [Pathology Commons](#)

---

### Recommended Citation

Vitkovski T, Bhuiya T, Esposito M. Utility of telepathology as a consultation tool between an off-site surgical pathology suite and affiliated hospitals in the frozen section diagnosis of lung neoplasms. . 2015 Jan 01; 6():Article 716 [ p.]. Available from: <https://academicworks.medicine.hofstra.edu/publications/716>. Free full text article.

This Article is brought to you for free and open access by Donald and Barbara Zucker School of Medicine Academic Works. It has been accepted for inclusion in Journal Articles by an authorized administrator of Donald and Barbara Zucker School of Medicine Academic Works. For more information, please contact [academicworks@hofstra.edu](mailto:academicworks@hofstra.edu).



J Pathol Inform. 2015; 6: 55.

PMCID: PMC4638

Published online 2015 Oct 28. doi: [10.4103/2153-3539.168515](https://doi.org/10.4103/2153-3539.168515)

## Utility of telepathology as a consultation tool between an off-site surgical pathology suite and affiliated hospitals in the frozen section diagnosis of lung neoplasms

Taisia Vitkovski,<sup>1,\*</sup> Tawfiqul Bhuiya,<sup>1</sup> and Michael Esposito<sup>1</sup>

<sup>1</sup>Department of Pathology, Hofstra North Shore-LIJ School of Medicine, Lake Success, New York, USA

Taisia Vitkovski: [tvitkovski@nshs.edu](mailto:tvitkovski@nshs.edu)

\*Corresponding author

Received 2015 Jul 9; Accepted 2015 Sep 21.

**Copyright** : © 2015 Journal of Pathology Informatics

This is an open access article distributed under the terms of the Creative Commons Attribution-NonCommercial-ShareAlike 3.0 License which allows others to remix, tweak, and build upon the work non-commercially, as long as the author is credited and the new creation is licensed under the identical terms.

### Abstract

#### Background:

Increasingly, as in our institution, operating rooms are located in hospitals and the pathology suite is located at a distant location because of off-site consolidation of pathology services. Telepathology is a technology which bridges the gap between pathologists and offers a means to obtain a consultation remotely. We aimed to evaluate the utility of telepathology as a means to assist the pathologist at the time of intraoperative consultation of lung nodules when a subspecialty pathologist is not available to directly review the slide.

#### Methods:

Cases of lung nodules suspicious for a neoplasm were included. Frozen sections were prepared in the standard manner. The pathologists on the intraoperative consultation service at two of our system hospitals notified the thoracic pathologist of each case after rendering a preliminary diagnosis. The consultation was performed utilizing a Nikon™ Digital Sight camera and web-based Remote Medical Technologies™ software with live video streaming directed by the host pathologist. The thoracic pathologist rendered a diagnosis without knowledge of the preliminary interpretation then discussed the interpretation with the frozen section pathologist. The interpretations were compared with the final diagnosis rendered after sign-out.

#### Results:

One hundred and three consecutive cases were included. The frozen section pathologist and a thoracic pathologist had concordant diagnoses in 93 cases (90.2%), discordant diagnoses in nine cases (8.7%), one case in which both deferred. There was an agreement between the thoracic pathologist's diagnosis the final diagnosis in 98% of total cases including 8/9 (88.9%) of the total discordant cases. In two cases the thoracic pathologist had not been consulted, the patient would have been undertreated.

### Conclusions:

We have shown that telepathology is an excellent consultation tool in the frozen section diagnosis of lung nodules.

**Keywords:** Intraoperative, telepathology, thoracic, virtual

## BACKGROUND

---

The field of telepathology has grown significantly since Ronald Weinstein first coined the term in 1981. Telepathology is a technology which bridges the gap between pathologists and offers a means to obtain consultation, remotely. It is now used for a wide variety of purposes including quality assurance, intraoperative consultations, remote viewing of gross specimens, and for education of medical students and residents.[2,3,4,5] Telepathology was first used for primary frozen section diagnosis in 1989 in Norway.[6] At our institution, the implementation of telepathology in daily practice grew out of a unique need. In 2010, the pathologists from two nearby hospitals were consolidated at a single off-site location situated 2 miles from the two hospitals. When a pathologist covering intraoperative consultations in one of the hospitals needs a second opinion, often the nearest pathologist is 2 miles away. To circumvent this issue, our institution began implementing inexpensive dynamic (real-time) telepathology as a consultation tool. Our pathologists are trained to use the system and are encouraged to use the technology as needed.

In this study, we focused on lung nodules clinically suspicious for neoplasm. Frozen section interpretation of lung nodules is inherently challenging due to an artifact, benign mimickers of neoplasms, and distinguishing invasive from *in situ* processes. This is particularly challenging for junior and nonthoracic pathologists who may require assistance from an expert thoracic pathologist. We aimed to evaluate the utility of telepathology as a means to assist the pathologist at the time of intraoperative consultation on lung nodules when an expert pathologist was not immediately available to look directly at the slide.

## METHODS

---

Approval from the Institutional Review Board was obtained. The pathologists on the intraoperative consultation service at two of our system hospitals, Long Island Jewish Medical Center and North Shore University Hospital, were instructed to call the thoracic pathologist (MJ Esposito or TA Bhuiya) for each case in which a lung nodule was clinically suspicious for a neoplasm. The thoracic pathologists were located at the off-site pathology suite. Specimens received for intraoperative consultation included wedge resections, lobectomies, pleural biopsies, and endobronchial biopsies. Frozen sections were prepared in the usual manner, cut at a thickness of 4  $\mu\text{m}$  and prepared using optimal cutting temperature media, a  $-20^\circ\text{C}$  cryostat, and hematoxylin and eosin staining. Touch preparations or smears, if desired, were prepared in the usual manner, followed by immediate alcohol fixation followed by hematoxylin and eosin staining.

The frozen section pathologist consulted the thoracic pathologist by telepathology utilizing a standard

microscope with attached Nikon™ Digital Sight camera and web-based Remote Medical Technologie software with live video streaming directed by the frozen section pathologist. [Figure 1](#) shows the image it appears on the desktop of the consultant pathologist. Relevant clinical information was provided, including patient age, sex, history, and the procedure performed. After the frozen section, pathologist rendered a preliminary diagnosis; he or she notified the thoracic pathologist of the case. The thoracic pathologist rendered his diagnosis without knowledge of the host's interpretation and subsequently discussed the case findings with the host. The interpretation was relayed to the surgeon only after both host and consultant discussed the case. Concordance of host and consultant diagnosis was noted. The frozen section pathologist was responsible for showing the areas of interest, and the thoracic pathologist was allowed to see as many fields at any magnification as needed before making the diagnosis. The quality of the image transmitted was noted by the consultant (excellent, good, or poor).

Final diagnoses of permanent sections were made in the usual fashion by one of three thoracic pathologists at our institution, including the two participating in the study as consultants. The interpretations made at the time of intraoperative consultation by the host and consultant pathologist were compared with the final diagnosis for concordance. Data on turnaround times was not collected as part of the study. Discrepancies were divided into minor and major based on therapeutic implications. We considered adenocarcinoma versus adenocarcinoma *in situ* (AIS) a minor discrepancy since the current standard of care is complete lobectomy for both. Deferred cases are not considered major or minor errors, but rather simply as deferred.

## RESULTS

---

Two thoracic pathologists and 17 generalist/nonthoracic subspecialty pathologists participated in the study. One hundred and three consecutive cases were obtained over a period from February 2013 to March 2014. The diagnoses ranged from chronic inflammation to primary and metastatic carcinomas, lymphoma, sarcoma, and carcinoid. The frozen section pathologist and a thoracic pathologist had concordant diagnoses in 93/103 cases (90.2%), discordant diagnoses in 9/103 cases (8.7%), and one case in which both were deferred. There was an agreement between the thoracic pathologist diagnosis and the final diagnosis in 98% of total cases including 8/9 (88.9%) of the total discordant cases. There was one case deferred by the host, six minor discrepancies, and two major discrepancies. In two cases, if the thoracic pathologist had not been consulted, the patient would have been undertreated. One of these cases was interpreted as a mucinous neoplasm by the host and was deferred. Interestingly, the host was one of the consultants in the study. In the other case, the host was unsure if the process was inflammatory or malignant.

Frozen section diagnoses were compared with permanent section diagnoses. Of the discordant cases between host and consultant pathologists, the frozen section pathologist was correct in one case and in the remaining eight cases the thoracic pathologist was correct. Discordant cases are shown in [Table 1](#). The most common cause of discordance at the time of frozen section was adenocarcinoma versus AIS [[Figure 2](#)]. In three cases, the image was noted to be of lesser quality (darker), however, this did not negatively impact the consultant's diagnosis. In one case noted to have an image of lesser quality, the consultant rendered a diagnosis which was concordant with the final interpretation while the host pathologist's diagnosis was discordant with the final interpretation.

## CONCLUSIONS

---

Telepathology has grown tremendously over the last nearly 30 years, and the technology has continue improve to a level in which we use it in daily clinical practice. The centralization of pathology groups away from the hospital setting has created not just an interest, but a need for a remote means of diagnosis.[7] In some institutions, a pathologist is not present in the cutting room, let alone the hospita and the slides are prepared by a pathology assistant.[8] The urgent nature of the intraoperative consult requires an efficient approach to obtaining a second opinion if it is needed. Thus, telepathology is an attractive option.[9]

The clinical expertise of the thoracic pathologist, as well as familiarity with the telepathology technol contributed to the outcomes in this study. One large study showed a concordance of clinically importa diagnoses between telepathology and light microscopy in 99.7% of cases (2138/2144).[10] A meta-analysis of more than 1290 cases showed a diagnostic accuracy of 0.91 of the telepathological fi section diagnosis versus 0.98 for the conventional frozen section.[11] Misdiagnoses on telepathology be attributed to sampling error, selection of microscopic fields not representative of the lesion, misinterpretation due to poor image quality, or misinterpretation not attributable to image quality.[11]

There are many variables to consider when using telepathology. The preparation of the slide is one of most important. Frozen section slides are more difficult to interpret than slides prepared from formalin fixed, paraffin embedded sections.[9] The slides are inherently laden with artifacts including air dryin shattering effect, rolling of the tissue, air bubbles, and thick sections, among others. Aspects of the telepathology technology must be considered. Telepathology can be static, dynamic, or a combination both. When using static or dynamic telepathology without robotic assistance, the referring pathologist the responsibility to show the most representative fields of the slide, at various magnifications.[12,13]

Slide scanning technologies include robotic microscopy (RM) and virtual slide (VS) system. The RM system is slower in terms of digitizing the image compared to the newer VS system which can rapidly digitize histologic sections on glass slides.[7] In a study by Evans *et al.*, diagnostic accuracy was repo as 98% with both modalities, and none of their discrepant diagnoses had a clinical impact. They recor the length of slide review and found that pathologists required an average of 9.65 min to review a slid RM and only 2.25 min for VS.[7] Wellnitz *et al.* noted that the time spent when using telepathology a tool for primary diagnosis is greater than for the second opinion when using a remotely operated RM. was largely attributed to the remote pathologist having to review nearly the entire slide.[14] We have implemented slide scanning systems at our institution.

Both the referring and remote pathologists practicing telepathology should be trained in telepathology The technology must be user-friendly and be able to receive and transmit the image with high speed a quality (i.e., color and resolution) with the ultimate goal of showing the remote pathologist an image which is interpretable, and ideally as true to the physical slide as possible.[15] Image quality and the ability to receive images depend on the computer hardware used and bandwidth of the telecommunica link.[16,17] Standards for these operations have not been set as they have been in teleradiology, partly because of the increased complexities for standardization compared with teleradiology.[18]

Distinguishing AIS versus invasive adenocarcinoma posed the greatest challenge for the host patholog In five out of nine discordant cases, the host pathologist diagnosed the tumor as AIS while the consult correctly identified invasive adenocarcinoma. While completion lobectomy is the current standard of for AIS, evidence shows that some patients may be treated with limited resection (wedge or

segmentectomy).[19,20] As guidelines evolve, it may become imperative for pathologists to be able to accurately distinguish the two entities.

While our institution has embraced telepathology, there is still a perception among some pathologists the technology is inferior to the live experience in terms of quality and ease of use.[7] Other barriers to implementing the technology include cost and time constraints. In this study, we have shown that telepathology is an excellent consultative tool in the frozen section diagnosis of challenging lung nodules. Learning to use this modality is imperative to the modern pathologist.

### Financial Support and Sponsorship

Nil.

### Conflicts of Interest

There are no conflicts of interest.

### Footnotes

Available FREE in open access from: <http://www.jpathinformatics.org/medproxy.hofstra.edu/text.asp?2015/6/1/55/168515>

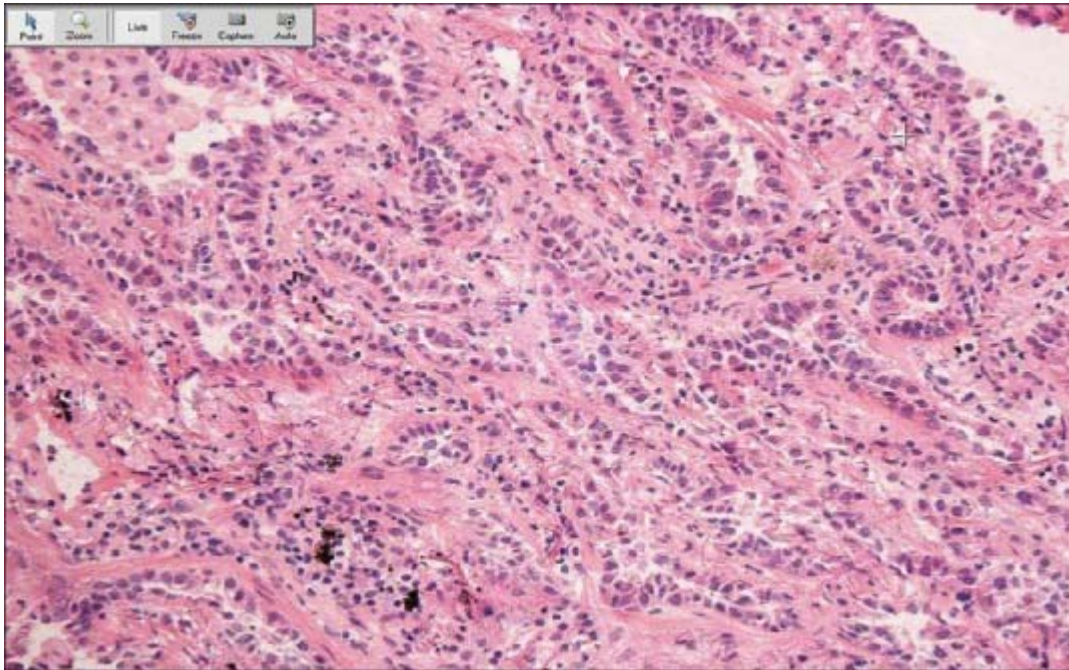
### REFERENCES

1. Weinstein RS, Bloom KJ, Rozek LS. Telepathology and the networking of pathology diagnostic services. *Arch Pathol Lab Med.* 1987;111:646–52. [PubMed: 3606341]
2. Graham AR, Bhattacharyya AK, Scott KM, Lian F, Grasso LL, Richter LC, et al. Virtual slide telepathology for an academic teaching hospital surgical pathology quality assurance program. *Hum Pathol.* 2009;40:1129–36. [PubMed: 19540562]
3. Dee FR, Meyerholz DK. Teaching medical pathology in the twenty-first century: Virtual microscopy applications. *J Vet Med Educ.* 2007;34:431–6. [PubMed: 18287469]
4. Ford JC, Pinder KE, Ovalle WK, Li CH. Pathology education in a multisite urban/rural distributed curriculum. *Hum Pathol.* 2008;39:811–6. [PubMed: 18538169]
5. Helin H, Lundin M, Lundin J, Martikainen P, Tammela T, Helin H, et al. Web-based virtual microscopy in teaching and standardizing Gleason grading. *Hum Pathol.* 2005;36:381–6. [PubMed: 15891999]
6. Nordrum I, Engum B, Rinde E, Finseth A, Ericsson H, Kearney M, et al. Remote frozen section series telepathology project in northern Norway. *Hum Pathol.* 1991;22:514–8. [PubMed: 1864583]
7. Evans AJ, Chetty R, Clarke BA, Croul S, Ghazarian DM, Kiehl TR, et al. Primary frozen section diagnosis by robotic microscopy and virtual slide telepathology: The university health network experience. *Hum Pathol.* 2009;40:1070–81. [PubMed: 19540554]
8. Dunn BE, Choi H, Recla DL, Kerr SE, Wagenman BL. Robotic surgical telepathology between the Mountain and Milwaukee Department of Veterans Affairs Medical Centers: A twelve year experience. *Hum Pathol.* 2009;40:1092–9. [PubMed: 19552935]

9. Kaplan KJ, Burgess JR, Sandberg GD, Myers CP, Bigott TR, Greenspan RB. Use of robotic telepathology for frozen-section diagnosis: A retrospective trial of a telepathology system for intraoperative consultation. *Mod Pathol*. 2002;15:1197–204. [PubMed: 12429799]
10. Dunn BE, Choi H, Almagro UA, Recla DL, Krupinski EA, Weinstein RS. Routine surgical telepathology in the department of veterans affairs: Experience-related improvements in pathologist performance in 2200 cases. *Telemed J*. 1999;5:323–37. [PubMed: 10908448]
11. Wellnitz U, Binder B, Fritz P, Friedel G, Schwarzmans P. Reliability of telepathology for frozen section service. *Anal Cell Pathol*. 2000;21:213–22. [PMCID: PMC4617511] [PubMed: 11339570]
12. Halliday BE, Bhattacharyya AK, Graham AR, Davis JR, Leavitt SA, Nagle RB, et al. Diagnostic accuracy of an international static-imaging telepathology consultation service. *Hum Pathol*. 1997;28:17–21. [PubMed: 9013826]
13. Weinstein LJ, Epstein JI, Edlow D, Westra WH. Static image analysis of skin specimens: The application of telepathology to frozen section evaluation. *Hum Pathol*. 1997;28:30–5. [PubMed: 9013]
14. Wellnitz U, Fritz P, Voudouri V, Linder A, Toomes H, Schmid J, et al. The validity of telepathology frozen section diagnosis with ISDN-mediated remote microscopy. *Virchows Arch*. 2000;437:52–7. [PubMed: 10963380]
15. Weinstein RS, Bloom KJ, Rozek LS. Telepathology. Long-distance diagnosis. *Am J Clin Pathol*. 1989;914(Suppl 1):S39–42. [PubMed: 2929514]
16. Weinberg DS, Allaert FA, Dusserre P, Drouot F, Retailiau B, Welch WR, et al. Telepathology diagnosis by means of digital still images: An international validation study. *Hum Pathol*. 1996;27:11. [PubMed: 8617451]
17. Krupinski EA. Virtual slide telepathology workstation-of-the-future: Lessons learned from teleradiology. *Semin Diagn Pathol*. 2009;26:194–205. [PubMed: 20069781]
18. Weinstein RS, Graham AR, Richter LC, Barker GP, Krupinski EA, Lopez AM, et al. Overview of telepathology, virtual microscopy, and whole slide imaging: Prospects for the future. *Hum Pathol*. 2009;40:1057–69. [PubMed: 19552937]
19. El-Sherif A, Gooding WE, Santos R, Pettiford B, Ferson PF, Fernando HC, et al. Outcomes of sub resection versus lobectomy for stage I non-small cell lung cancer: A 13-year analysis. *Ann Thorac Su* 2006;82:408–15. [PubMed: 16863738]
20. Nakamura H, Kawasaki N, Taguchi M, Kabasawa K. Survival following lobectomy vs limited resection for stage I lung cancer: A meta-analysis. *Br J Cancer*. 2005;92:1033–7. [PMCID: PMC2361] [PubMed: 15756281]

## Figures and Tables

---

**Figure 1**

Remote consultation. The host pathologist is responsible for showing the areas of interest to the consultant, at multiple magnifications. The quality of the transmitted image depends on multiple factors, starting with the preparation of the slide. This screenshot shows the transmitted image as it appears on the desktop of the consultant pathologist

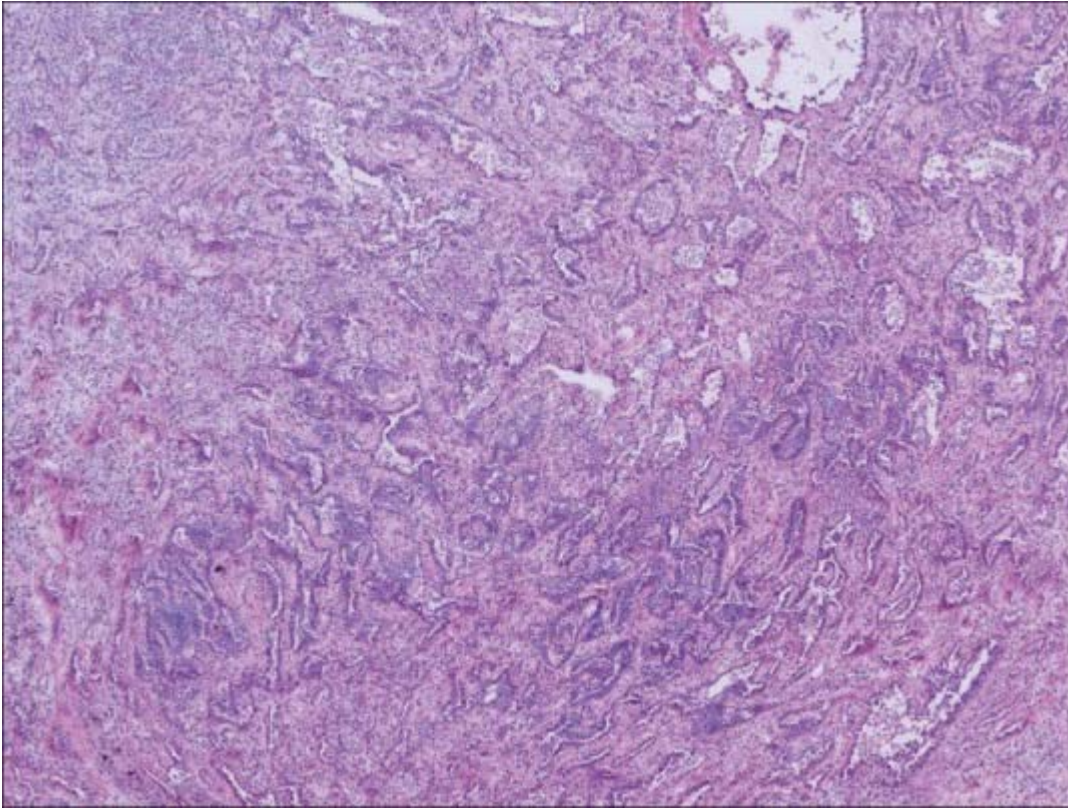


**Table 1**

<b>Discordant cases Consultant correct</b>		
<b>Host diagnosis</b>	<b>Consultant diagnosis</b>	<b>Final diagnosis</b>
Adenocarcinoma <i>in situ</i>	Adenocarcinoma	Adenocarcinoma
Inflammatory vs. malignant	Malignant neoplasm, pleomorphic carcinoma consistent with previous lymph node metastasis	High-grade malignancy con with pleomorphic carcinom
Mucinous neoplasm, deferred	Mucinous adenocarcinoma	Mucinous adenocarcinoma
Adenocarcinoma <i>in situ</i>	Adenocarcinoma	Adenocarcinoma
Non-small cell carcinoma, possible metastasis	Typical carcinoid	Typical carcinoid
Adenocarcinoma <i>in situ</i>	Mucinous adenocarcinoma	Mucinous adenocarcinoma
Favor adenocarcinoma <i>in situ</i>	Adenocarcinoma	Adenocarcinoma
Adenocarcinoma <i>in situ</i>	Adenocarcinoma	Adenocarcinoma
<b>Host correct</b>		
Malignant neoplasm, neuroendocrine carcinoma vs. salivary gland type	Malignant neoplasm, favor small cell carcinoma	Salivary gland type salivary carcinoma

Discordant cases among host and consultant pathologists

**Figure 2**



Adenocarcinoma. The distinction between adenocarcinoma and adenocarcinoma *in situ* was particularly challenging the host pathologists in this study. This frozen section slide of adenocarcinoma was correctly interpreted as adenocarcinoma by the consultant pathologist and as AIS by the host pathologist

---

Articles from Journal of Pathology Informatics are provided here courtesy of **Medknow Publications**