

2015

Antibodies as Mediators of Brain Pathology

L. Brimberg

Zucker School of Medicine at Hofstra/Northwell

S. Mader

Northwell Health

Y. Fujieda

Northwell Health

Y. Arinuma

Northwell Health

C. Kowal

Zucker School of Medicine at Hofstra/Northwell

See next page for additional authors

Follow this and additional works at: <https://academicworks.medicine.hofstra.edu/publications>



Part of the [Medical Molecular Biology Commons](#)

Recommended Citation

Brimberg L, Mader S, Fujieda Y, Arinuma Y, Kowal C, Volpe BT, Diamond B. Antibodies as Mediators of Brain Pathology. . 2015 Jan 01; 36(11):Article 2891 [p.]. Available from: <https://academicworks.medicine.hofstra.edu/publications/2891>. Free full text article.

This Article is brought to you for free and open access by Donald and Barbara Zucker School of Medicine Academic Works. It has been accepted for inclusion in Journal Articles by an authorized administrator of Donald and Barbara Zucker School of Medicine Academic Works. For more information, please contact academicworks@hofstra.edu.

Authors

L. Brimberg, S. Mader, Y. Fujieda, Y. Arinuma, C. Kowal, B. T. Volpe, and B. Diamond



Published in final edited form as:

Trends Immunol. 2015 November ; 36(11): 709–724. doi:10.1016/j.it.2015.09.008.

Antibodies as Mediators of Brain Pathology

Lior Brimberg, Simone Mader, Yuichiro Fujieda, Yoshiyuki Arinuma, Czeslawa Kowal, Bruce T. Volpe, and Betty Diamond*

Feinstein Institute for Medical Research, Manhasset, NY, USA

Abstract

The brain is normally sequestered from antibody exposure by the blood brain barrier. However, antibodies can access the brain during fetal development before the barrier achieves full integrity, and in disease states when barrier integrity is compromised. Recent studies suggest that antibodies contribute to brain pathology associated with autoimmune diseases such as systemic lupus erythematosus and neuromyelitis optica, and can lead to transient or permanent behavioral or cognitive abnormalities. We review these findings here and examine the circumstances associated with antibody entry into the brain, the routes of access and the mechanisms that then effect pathology. Understanding these processes and the nature and specificity of neuronal autoantibodies may reveal therapeutic strategies toward alleviating or preventing the neurological pathologies and behavioral abnormalities associated with autoimmune disease.

Introduction

There has been much recent study of genetic variants that contribute to abnormal cognition or behavior. While this has been a fruitful area of investigation, there is growing evidence that environmental triggers, perhaps in conjunction with genetic risk factors, are also important in both early- and late-onset disturbances in brain function [1]. In particular, perturbations in both the innate and the adaptive immune system can alter brain development in the fetus as well as brain function in the adult [2,3]. Two major classes of immune effector molecules – cytokines and antibodies - have been demonstrated to affect brain development and brain function [3–5]. In particular, our appreciation of the spectrum of antibodies with this potential keeps growing. It is now appreciated that brain-reactive antibodies can arise as a result of autoimmune disease or as an untoward consequence of an antimicrobial response. Autoimmune diseases such as systemic lupus erythematosus (SLE) and neuromyelitis optica (NMO) are characterized by brain-reactive serology and Sydenham’s chorea, which develops after exposure to group A *Streptococcus*, is characterized by so-called signaling autoantibodies – antistreptococcal antibodies that are cross reactive with dopamine receptors [6,7]. Brain-reactive antibodies may also be a feature of paraneoplastic syndromes, arising through cross reactivity with tumor antigens.

Here we review the current understanding of the impact of antibodies on brain development and function. We examine the settings in which antibodies are able to access the ‘immune-

*Correspondence: BDiamond@NSHS.edu (B. Diamond).

privileged' environment of the central nervous system (CNS) and the routes used for this access. In the context of autoimmune disease, we discuss the known neuronal targets of antibodies and the antibody-mediated effector mechanisms that mediate brain pathology. We center this discussion on two autoimmune diseases – SLE and NMO – presenting these as paradigms for the study of the potential contribution of antibodies to congenital and acquired brain disease. A deeper understanding of the nature and specificity of neuronal autoantibodies, and the circumstances and ways in which these antibodies access the CNS, should enable new therapeutic strategies toward alleviating or preventing the neurological pathologies and behavioral abnormalities associated with autoimmune disease.

The Blood–Brain Barrier (BBB)

The BBB is the major interface between molecules in the circulation and the brain. Its architecture was recently described as a two-walled moat surrounding the brain [8,9] that separates blood from interstitial fluid. It comprises endothelial cells tightly linked by specialized proteins that form the tight junction. Astrocytes lay down a basement membrane (glia limitans) in which pericytes reside. The endothelial barrier and the glia limitans help control the composition of the interstitial fluid in the brain and help shield the brain from the surrounding interstitial fluid. Barrier properties are most restrictive in the capillaries and are less so in the venules. Perivascular macrophages sample the cerebrospinal fluid (CSF) in the space between the astrocytic and endothelial basement membrane, within post-capillary venules. They harbor phagocytic properties and might have important implications as antigen-presenting cells.

The blood–CSF barrier (BCSFB) separates blood from the CSF and is formed by epithelial cells of the choroid plexus, which possess unique apical tight junctions. In addition to serving a barrier function, the choroid plexus epithelial cells secrete CSF. This architecture permits a continuous interchange of CSF and interstitial fluid and has been recently named the glymphatic system [10]. The finding of functional lymphatic vessels that connect the CSF with the deep cervical lymph nodes allows passage of immune cells and immune molecules into the CNS [11,12].

The BBB begins to be formed early in embryonic development, following neovascularization of the neural tube at embryonic day 10.5 (E10.5) [13]. There are many studies that have investigated the timing of BBB development during embryogenesis [14]. It is clear that even during the very early stages of brain development there is a limitation on the transit of molecules from the blood to the brain parenchyma that is more restrictive than that in other tissues. Our own studies, however, demonstrate that, in mouse, the BBB is not fully impenetrable to IgG until ~ E17.5 when there is almost total exclusion of IgG in the brain [15]. Presumably a similar window of vulnerability to IgG exists for the developing human brain [16]. Thus, there is a short window during the second trimester of gestation when maternal IgG crosses the placenta to enter the fetal bloodstream and may access the brain parenchyma. After this brief developmental window, the barrier prohibits IgG access to the brain. We have demonstrated that aspects of maternal physiology can impair the development of a competent BBB in the fetus. For example, female mice lacking gut microbiota harbor fetuses that never develop a proper BBB, and even as adults the offspring

have leaky barrier properties. Reconstitution of the adult offspring with a gut microbiome leads to proper maturation of the BBB [15]. The spectrum of maternal abnormalities that cause either transient or permanent deficiency in BBB integrity is unknown.

The BBB is a dynamic structure and contact with various molecules can alter barrier integrity. Mechanisms for altering the barrier function include altering the integrity of the tight junctions between the endothelial cells or affecting the capacity of the endothelial cells to internalize molecules through receptor-mediated internalization; for example, in the transport of cytokines or chemokines [17]. Interestingly, many molecules that impair barrier integrity are soluble mediators released during inflammation. In sepsis, characterized by dramatic activation of an innate immune response, it is well documented that there is a massive breakdown in barrier integrity [18]. Because imaging studies of the BBB remain relatively insensitive to small changes in barrier function, we do not know whether chronic inflammatory diseases characterized by a lower level of inflammatory mediators in the plasma might be associated with a low-level, but chronic, barrier breach that might have clinical consequences. It is well documented that barrier modulators include bacterial and viral infection, systemic inflammation, trauma, brain ischemia, and stress, as well as specific agonists of endothelial receptors like nicotine, caffeine, and cocaine [19]. The exact mechanisms by which each of these conditions alters barrier integrity are unknown, although many would appear to alter the integrity of the tight junctions. Two additional aspects of BBB function need to be mentioned. First, insults causing inflammation within the brain, with activation of the inflammatory properties of microglial cells, can also impair barrier integrity. Second, the microvascular endothelial cells of the brain are specifically designed to shield the brain from IgG and have transport receptors for immunoglobulin, the neonatal FcR (FcRn), usually located at the luminal surface of the endothelial cell and responsible for transporting IgG into tissue at the abluminal surface, where it functions to transport IgG out of the perivascular space and interstitial fluid. Under healthy conditions, IgG is removed from the CNS by reverse transcytosis across the BBB [20], mediated by the FcRn [21]. When the BBB is compromised, net influx of IgG is increased such that FcRns are saturated, resulting in accumulation of IgG in the parenchyma (Figure 1).

There are also reports of impaired barrier integrity with aging, Alzheimer's disease, and atherosclerosis [22]. ApoE-deficient mice, an important model of both atherosclerosis and Alzheimer's disease, exhibit a BBB that is leaky to small molecules and in some cases to IgG [23–25]. Given the growing list of conditions with altered BBB function, it is probable that we will continue to identify even more conditions associated with altered BBB properties. Whether antibody can enter the brain without traversing tight junctions is not established, although the mechanism of transcytosis has been exploited for therapeutic antibody delivery in model systems [26].

By contrast, only a few mechanisms are known to maintain BBB integrity. Glucocorticoids appear to support barrier properties [27], as do interferons [28–30]. Type 1 interferon prevents barrier disruption through multiple mechanisms. It reduces neutrophil invasion following inflammatory insults and diminishes their production of matrix metalloproteinase 9 (MMP9) [31]. It also increases expression of ecto-5'-nucleotidase (CD73) on endothelial cells, thereby increasing the local concentration of adenosine, an anti-inflammatory

molecule [32]. The therapeutic efficacy of β -interferon in multiple sclerosis may in part reflect its effects on barrier integrity [33].

Studies in rodent models have demonstrated that the BBB is not a homogeneous structure and that receptors for modulators of barrier integrity are present at different densities on the lumen of endothelial cells in different regions of the brain. For example, we have demonstrated that systemic administration of bacterial lipopolysaccharide (LPS) will permit IgG to access primarily the hippocampus [34,35] while systemic administration of epinephrine will expose cells mainly in the amygdala to blood-borne substances [36]. It is possible that the regional distribution of TLR4 and TLR5 may mediate the specific hippocampus impairment by LPS [37], while epinephrine might cause a selective leak of the BBB by increasing differentially the cerebral blood flow in the amygdala [38] and therefore induce changes in vascular permeability [39]. Insufficient information currently exists on the regional distribution of TNF receptors, complement component receptors, and others that modulate BBB integrity. The regional specificity of BBB compromise allows the same circulating antibody to have different effects on brain function depending on the region of exposure to antibody. In addition, certain areas of the brain – the circum ventricular organs – lack an intact BBB and thus might be important regions for antibody passage [40].

Antibodies may also alter brain function if they are produced locally within the CNS or the meninges by infiltrating B cells. In multiple sclerosis (MS), oligoclonal IgG bands in the CSF are a hallmark of the disease [41]. B cells have been identified in tertiary lymphoid structures of the meninges and Virchow–Robin spaces, where antigen-specific B cells clonally expand [42]. Understanding whether brain-reactive antibodies are produced by B cells sequestered in the brain or by peripheral B cells has important therapeutic implications; however, most brain pathology caused by antibody appears to reflect transit of IgG into the brain rather than local production.

Antibodies in the Adult Brain

Over the past decade, several antibodies have been described that bind to various extracellular or intracellular CNS antigens (Table 1, Key Table). For example, a substantial number of patients with neoplasms that trigger production of antibodies to oncofetal proteins and elicit neuromuscular symptoms also suffer cognitive impairment associated with antibodies that bind to neuronal antigens (for a review see [3]). In many of these patients, the development of antibodies is secondary to the presence of a primary tumor that expresses neuronal antigens. Antibodies that bind brain antigen are also present in patients with autoimmune disease, including celiac disease, type 1 diabetes, and thyroiditis [43–45]. Many of these appear to bind antigens that are not restricted to the brain or to bind antigens in other organs and crossreact with brain antigens. In many patients, there is no discernible brain pathology but increasingly there is awareness that these diseases may be associated with cognitive impairment. Whether, and to what degree, antibodies are responsible for the neurocognitive symptoms requires further study.

For the present discussion, we focus on SLE and NMO, two autoimmune diseases that have been shown to be B cell dependent [46,47]. Neuropsychiatric SLE (NPSLE) is characterized

by autoantibodies directed against neuronal antigens in at least a substantial group of patients. These include anti-*N*-methyl-D-aspartate (NMDA) receptor (NMDAR) antibodies, which are a cross reactive subset of anti-DNA antibodies, the hallmark autospecificity in SLE, and antiribosomal P protein (anti-P) antibodies. Both of these antibody specificities can induce NPSLE in mice [35,36,48]. By contrast, as we further discuss in below, in NMO antibodies are directed against antigen on glial cells.

Autoantibodies in SLE and the Induction of Behavioral Abnormalities

Anti-DNA/NMDAR Antibodies

SLE patients are known to harbor autoantibodies of multiple specificities, such as antiphospholipid, anti-Ro, and anti-DNA antibodies. Anti-DNA antibodies are the most common autospecificity in SLE [49]. A subset of anti-dsDNA autoantibodies has been demonstrated to crossreact with the NMDAR (anti-DNA/NMDAR antibody) [50]. The NMDAR is a glutamate receptor and ion channel protein found in nerve cells. Glutamate is a major excitatory neurotransmitter in brain involved in synaptic plasticity and memory function. The anti-DNA/NMDAR antibodies bind to the GluN2A and GluN2B subunits of the NMDAR, which contain the consensus peptide sequence D/E-W-D/E-Y-S/G (DWEYS) [51]. Both murine and human anti-DNA/NMDAR antibodies, the latter cloned from B cells of SLE patients, cause dose-dependent excitotoxic neuronal death when injected directly into the hippocampus [50,52] of a non-autoimmune, unmanipulated mouse. The anti-DNA/NMDAR antibodies preferentially bind the active receptor, presumably prolonging the time during which the channel is open to calcium influx [52]. Over stimulation of the NMDAR leads to a high influx of calcium into the cell, causing neuronal dysfunction and cell death.

BALB/c mice immunized with the DWEYS peptide in a multimeric configuration (MAP-DWEYS) produce anti-DNA/NMDAR antibodies [50]. Despite the presence of anti-DNA/NMDAR antibodies in the serum of these mice, there is no detectable binding to neurons or damage in neurons of the brain that could be detected in histologic analyses. In this model, a breach in the integrity of the BBB is required for antibody to access brain tissue and affect neuronal function and viability. LPS injection as a surrogate for infection leads to the extravasation of the antibody into the hippocampus and, consequently, focal neuronal loss and cognitive deficits [35]. By contrast, epinephrine injection in mice as a surrogate for stress allows antibody to penetrate the amygdala, and neuronal loss in that region leads to emotional disturbances that can be assessed in studies of the response to aversive stimuli [36]. These data show that regional disruption of the BBB is dependent on the agent used to modify the BBB and, thus, that the same antibody can cause variable behavioral changes.

Two weeks post-BBB breach, FDG-PET imaging of MAP-DWEYS-immunized mice revealed lowered glucose uptake, a surrogate for metabolic activity, in the hippocampus or amygdala, respectively, compared with the baseline signal, whereas control mice immunized with MAP only and given LPS showed heightened glucose uptake [53]. At 4 weeks post-BBB breach, both groups exhibited increasing glucose uptake in the affected region. In control mice, glucose uptake was directly related to neuron number, while in mice with anti-DNA/NMDAR antibodies there was an inverse relationship between neuron number and metabolism. The increase in glucose uptake that occurs between 2 and 4 weeks post-BBB

breach in mice harboring the lupus-like antibodies is thought to reflect enhanced synaptic and/or glial activation. Importantly, hippocampal increase in glucose uptake is commonly seen in SLE patients [54] subjected to FDG-PET imaging, suggesting that they might also have sustained glial activation.

Most recently, we have demonstrated that there are late sequelae of anti-DNA/NMDAR antibody penetration of the hippocampus [55]. After antibody can no longer be detected in brain tissue, neurons in the hippocampus undergo a loss of dendritic processes. Hippocampal neurons possess place-cell activity and are responsible for generating spatial maps of the environment. Each neuron fires when the mouse is in a particular location (place field). Two to four weeks after antibody penetrates the hippocampus and cues the acute death of some neurons, surviving neurons display decreased dendritic complexity and enlarged place-field size along with diminished spatial memory. We speculate that the alteration in dendritic processes may also reflect glial activation [55].

Many reports have indicated an association of autoantibodies with the mechanism of psychiatric manifestations in human SLE patients. In some studies, anti-DNA/NMDAR antibodies are elevated in serum from patients with active non-focal NPSLE [56,57], such as confusional state or psychosis. However, in other studies the presence of these antibodies in serum was not associated with active diffuse NPSLE [58–63]. These results suggest that when anti-DNA/NMDAR antibodies are present only in serum they do not mediate neuropsychiatric manifestations. However, the level of anti-DNA/NMDAR antibodies in the CSF was significantly elevated in patients with active non-focal NPSLE compared with NPSLE patients with focal NPSLE or patients with noninflammatory disease in the CNS [63]. These results suggest that the direct access of pathogenic autoantibodies to the CNS is a key factor for the development of neuropsychiatric manifestations in SLE. In SLE, antibodies appear to access the brain secondary to BBB compromise, which can be assessed by the presence of albumin in the CSF [64]. There is little evidence for infiltration of antigen-specific B cells into the brain parenchyma.

Interestingly, anti-DNA/NMDAR antibodies have been reported to react with human umbilical vein endothelial cells, resulting in the production of inflammatory cytokines [65]. Thus, anti-DNA/NMDAR antibodies might directly damage brain vessels and contribute to the breakdown of the BBB [66].

Anti-P Antibodies

Anti-P antibodies were first identified by binding to the C-terminal regions of three ribosomal P proteins (P1, P2, and P0) [67]. The binding site on the ribosomal proteins has been characterized and termed the P epitope. Recently these antibodies were shown to crossreact with a high molecular weight integral plasma membrane protein of unknown function called neuronal surface P antigen (NSPA), which possesses a P epitope at the cell surface [66] and is expressed exclusively in neurons. Passive transfer experiments in mice showed that anti-P antibodies isolated from SLE patients induced smell alterations [68], depression-like manifestations [69], and memory impairment [48]. Immunohistochemistry analyses of NSPA expression patterns in the brain revealed that NSPA is present in multiple areas, including the cortex, amygdala, and hippocampus, and is expressed exclusively in

neurons [70]. When added to primary neuron cultures, anti-P antibody induces calcium influx followed by apoptosis; similarly, direct injection of anti-P antibodies into the brain of normal mice results in neuronal death through an excitatory glutamatergic pathway [66].

Anti-DNA/NMDAR antibodies and anti-P antibodies both recognize neuronal cell surface antigens that enhance glutamate-induced neuronal activation, but they act through different mechanisms. At low concentrations, anti-DNA/NMDAR antibody increases excitatory postsynaptic potentials (EPSPs) by directly interacting with an epitope of NMDAR that becomes accessible in the open channel configuration once the Mg^{2+} plug has been removed. At higher concentrations, an excess of calcium flux into the cell leads to neuronal death [52]. By contrast, anti-P antibody enhances glutamatergic transmission in the presence of Mg^{2+} through a mechanism mediated by NSPA and involving the α -amino-3-hydroxy-5-methyl-4-isoxazole-propionic acid receptor (AMPA) and NMDAR activation [70]. Like anti-DNA/NMDAR antibodies, intravenously injected anti-P antibodies impaired memory function in mice after LPS administration [70]. Anti-P antibodies can potentiate the pathogenic effects of anti-DNA/NMDAR, promoting the active configuration of the NMDAR, and the concomitant presence of both antibodies might constitute another factor in brain dysfunction variability.

Anti-P antibodies are major autoantibodies that are present in the serum of 40–50% of active non-focal NPSLE patients [71,72]. *In vitro*, anti-P antibodies from patients with diffuse NPSLE can directly react with the surface of human peripheral blood monocytes, which results in TNF- α production [73]. Therefore, anti-P antibodies could be associated with auto antibody-mediated inflammation in the CNS through the mechanism of BBB rupture by monocyte-derived TNF- α with or without infiltration of activated macrophage into CNS [73]. Accordingly, anti-P antibodies might also activate the immune system, access the CNS, and directly damage neurons in SLE patients [48,73].

Taken together, these findings suggest that two phases are required for the development of neuropsychiatric or neurocognitive manifestations in human lupus patients. The first phase involves the direct access of pathogenic autoantibodies to the CNS, mainly as a consequence of influx from the systemic circulation to the CNS following the breakdown of the BBB. The second phase involves either direct or microglia-mediated damage of neurons by autoantibodies in the CNS. It should also be noted that whereas anti-DNA/NMDAR and anti-P antibody specificities have been studied extensively, other brain-reactive antibodies have been reported in SLE [74]. Furthermore, there is a growing awareness that antibodies implicated in other autoimmune diseases may crossreact with brain targets. For example, antigliadin antibodies present in patients with celiac disease have been shown to crossreact with antigens expressed by Purkinje cells in the cerebellum [75] and to bind to neuronal synapsin I [44]. Thus, the paradigm described above for anti DNA/NMDAR and anti-P antibodies may hold true for antibody-associated neuropsychiatric and neurocognitive impairment in many autoimmune diseases.

NMO: Cognitive Impairments Resulting From Antibodies Targeting Non-Neuronal Cells

Brain-reactive antibodies that bind to non-neuronal cells can also alter neuronal viability or function through mechanisms that are not yet well described. Antibodies that result in glial cell death can impair neuronal survival. Patients afflicted with the autoimmune disease NMO have antibodies directed against astrocytes in their serum [76]. Lennon and colleagues [77] discovered that these astrocyte antibodies in patients with NMO bind the antigen aquaporin-4 (AQP4), a water channel protein that is expressed on astrocytic foot processes surrounding blood vessels and that controls the flow of water in and out of the brain. A pathogenic role of AQP4 antibodies was first suggested due to pathologic findings of a massive deposition of antibody and complement components surrounding blood vessels [78]. The mechanism through which the loss of astrocytes leads to demyelination and neuronal loss is not fully understood; however, there is emerging evidence that astrocytes can regulate myelination [79], maybe by modulating the function of oligodendrocytes. Alternatively, *ex vivo* data suggest that patients' antibodies that target astrocytes can damage oligodendrocytes secondarily, possibly due to a bystander effect caused by glutamate-mediated excitotoxicity [80].

Serum AQP4 antibodies can help in diagnosing the disease at an early stage and thereby can enable early treatment. This is particularly important as NMO can closely resemble other diseases such as MS, which often require different treatment approaches [81]. Confirming the importance of autoantibodies in NMO pathology, antibody- or B-cell-depleting treatment is beneficial for NMO patients, whereas β -interferon, commonly used for treating MS, can exacerbate the disease [81]. Clinical assays for detection of AQP4-IgG have high sensitivity and specificity and thus antibody serology is included as a diagnostic criterion for NMO [82,83]. Approximately 70–90% of NMO patients are seropositive for AQP4-IgG [84,85] and this range is thought to depend on differences in the detection assays. AQP4-IgG recognizes conformational epitopes and therefore antibodies can be detected with the highest sensitivity and specificity with cell-based assays using a transfected cell line expressing AQP4 on the cell surface [86–88].

NMO was initially described as a disease that selectively targets astrocytes in the optic nerve and spinal cord and spares the brain [89]; however, brain MRI abnormalities are very common in patients with AQP4-IgG [90] and brain lesions are found in areas of high AQP4 expression, most prominently in the grey matter. NMO patients exhibit cognitive impairment and cortical neuronal loss [91].

Intravenous injection of AQP4-IgG into rodents, without disrupting the BBB, does not result in a neuropsychiatric phenotype [47]. This finding is consistent with the observation that AQP4-IgG can be detected in the serum of NMO patients many years before the full onset of the disease [92]. However, the inflammatory setting that leads to the breach of the BBB in NMO is not well understood. It is also unclear how the antibodies exert their pathologic effect. Some studies have suggested that AQP4 antibodies damage the brain in concert with pathogenic T cells; other studies suggest that complement- or antibody-dependent cellular cytotoxicity is the critical mechanism [93–95]. *In vivo* models of NMO require either

induction of experimental autoimmune encephalitis (EAE) to activate the BBB-disrupting pathogenic T cells reactive to antigens expressed in the brain [47,96] or direct intracerebral injection of antibodies together with human complement to mediate CNS injury [97]. It is possible that there is not a single mechanism of BBB insult in NMO. Different mechanisms of BBB compromise might be specific to distinct regions of the brain or spinal cord and thus might correlate with the heterogeneous pattern of lesions that have been described in NMO [98]. Moreover, some mechanisms might permit only IgG to enter the brain, as we have seen in our LPS-induced model of BBB compromise, while others, such as EAE induction, permit cellular entry and *in situ* production of IgG [99,100]. Evidence, albeit rare, supporting the latter model comes from the identification of transient oligoclonal IgG bands in the CSF of some patients [93], suggesting that the antibodies in the CSF may be made from B cells residing in brain parenchyma where they might locally produce antibodies, as in MS.

In vivo models differ in terms of where the breach of the BBB occurs and the time it takes for this to occur. For example, the choice of antigen-specific T cells for *in vivo* NMO/EAE models results in different regional brain lesions and varying disease severity [101]. Whether specific brain-reactive T cells, perhaps AQP4-reactive T cells [94,102,103], are necessary to initiate or propagate the disease remains unresolved [94,102]. However, T cells are present in brain lesions of NMO patients [101]. A role for cytokines has been demonstrated by injecting cytokines directly into the striatum of AQP4-seropositive rats [104]. IL-1 β was the only cytokine capable of inducing NMO lesions outside the needle track. Interestingly, IL-1 β is also found in active human NMO lesions [104]. These rodent NMO models partially mimic human disease, specifically the initial stages of the disease [105].

Overall, these studies demonstrate that antibodies capable of causing brain pathology can remain in the circulation for a long period of time. Providing they do not penetrate the BBB, there are no CNS sequelae. Mechanisms of BBB breach in the adult organism can permit soluble molecules to penetrate the brain parenchyma or cells as well as soluble molecules. The mechanism, and the location, of BBB breach depends on the particular stressor. Once antibodies penetrate the CNS, they may alter brain function through damaging cells, either neurons or glial cells, or through altering cell function. Finally, there are both immediate and late sequelae of antibody exposure. The availability of appropriate animal models is critical as studies of patients may be confounded by cohorts that express similar antibodies but differ with respect to mechanism of barrier breach and disease state.

Maternal Antibodies and the Fetal Brain

During pregnancy, the placenta provides a barrier between the maternal and fetal circulation while simultaneously allowing the transfer of a wide range of substances to the fetus, including nutrients. Among these factors are maternal IgG molecules, which start to cross the placenta around the second trimester and provide the developing fetus with humoral immunity, since the fetal immune system is immature at this stage (for a review see [106]). Nevertheless, there are circumstances in which placental transmission of antibodies is deleterious to the infant. For example, neonatal lupus is a rare disorder in which maternal anti-Ro/SSA and/or -La/SSB antibodies can lead to transient symptoms including skin rash,

liver problems, or low blood cell counts that typically disappear after 6 months with no lasting effects [107]. These antibodies can also lead to congenital heart block with a permanent structural heart defect [107]. Transient and/or permanent tissue injury secondary to maternal antibodies has also been reported in myasthenia gravis [108], antiphospholipid syndrome, and other autoimmune diseases [109].

Once maternal IgG crosses the placenta, the antibodies can penetrate all tissues including the developing brain. Importantly, although the mature BBB prevents IgG entry into the adult CNS, in the fetus IgG can penetrate the brain [15], potentially through an immature BBB, through the blood–CSF barrier, or perhaps through the vascular fenestration in the circumventricular organ. In mice, we have recently confirmed that the brain is accessible to maternal antibodies from E13.5 to E16.5 [15]. Maternal autoantibodies in patients afflicted with SLE and NMO have been shown to affect fetal neurodevelopment, as we discuss below. In addition, we discuss the evidence for a role for maternal antibodies in autism spectrum disorder (ASD).

Maternal Autoantibodies in SLE

Several studies have suggested that children, particularly the sons of mothers with SLE but not fathers, are at increased risk for learning disabilities [110–113]. Other epidemiologic studies suggested that children born to mothers with SLE have, in general, a higher risk of neurodevelopmental disorders, including ASD [114]. Studies in mice have further sustained a potential link between exposure to SLE and neurodevelopmental disorders. We showed cortical abnormalities in fetuses exposed *in utero* to monoclonal anti-DNA/NMDAR IgG cloned from an SLE patient [115]. Moreover, we studied a mouse model in which dams harbor anti-DNA/NMDAR-specific autoantibodies throughout gestation to demonstrate that fetal brain exposed to high titers of anti-DNA/NMDAR antibodies showed increased neuronal cell death, abnormal neuronal proliferation, and thinning of the cortical plate. Live offspring in these studies showed delayed reflexes as neonates and cognitive impairments in cortex-dependent tasks as adults [115]. Interestingly, these developmental effects were evident primarily in male offspring, as exposure *in utero* to high titers of anti-DNA/NMDAR antibodies led to a preferential loss of female fetuses, apparently due to the apoptotic effects mediated by these antibodies on neurons expressing GluN2A in the midbrain. GluN2A is expressed earlier in female compared with male midbrain and mice lacking GluN2A exhibited no fetal loss in this model [116]. Interestingly, it was recently confirmed that mothers with SLE are more likely to have a male child [117]. This finding further supports the hypothesis that maternal antibodies may have gender-specific effects on brain development.

It should be mentioned that additional maternal anti-NMDAR antibodies against GluN1 have been described as leading to cortical dysplasia in offspring in NMDA encephalitis [118].

ASD

The possibility that maternal autoantibodies can lead to a subset of ASD has been entertained for more than a decade. Several investigators have identified the presence of

antibodies that bind to human fetal brain tissue in a subset of women who have children with ASD [119–122].

In the largest study that has been performed so far, including 2789 mothers of an ASD child, we have shown that brain-reactive antibodies are present at higher frequency in mothers of an ASD child. Among mothers of an ASD child, 10.5% harbor antibodies with strong reactivity to mouse-brain antigens, compared with 2.6% of unselected age-matched women [119]. When researchers gave these antibodies to pregnant mice and monkeys, they caused abnormal behavior in their offspring including increased motor activity, stereotypic behavior, anxiety-like behavior, and alterations in sociability [123–128]. A recent study showed prenatal exposure to antibrain antibodies also alters neuronal proliferation and brain size [129].

Unlike the offspring of SLE mothers, who have a pre-identified medical condition, in ASD the mothers may have no obvious autoantibody-related pathology; however, brain-reactive antibodies appear to be more common in women with autoimmune disease. Atladóttir and colleagues have shown that mothers with rheumatoid arthritis or celiac disease have an almost double increased risk of having a child with ASD [130]. Our own study associated the presence of maternal antibrain antibodies with increased autoimmune disease in mothers of a child with ASD [119].

The specificity of the brain-reactive antibodies associated with ASD is an area of active investigation [120]. Several neuronal antigens expressed in the developing brain have already been suggested as possible targets [120]. Given the heterogeneity of the disease, it is highly likely that different antibody specificities will be associated with distinct symptoms of ASD. For example, Braunschweig and colleagues have shown that maternal serum reactive with a particular molecular weight band on western blots of brain correlated with lower expressive language scores in the affected offspring while reactivity to a different molecular weight band size correlated with increased irritability [131].

Maternal Antibodies in NMO

In NMO, a disease that affects primarily women of childbearing age, the possible effect of AQP4 antibodies on fetal CNS development has only recently been addressed. During pregnancy, women with AQP4-IgG have a more severe disease, develop preeclampsia more often, and have an increased risk of miscarriage [132,133]. Case reports have suggested placental inflammation or birth defects in offspring that were exposed *in utero* to AQP4-IgG [132,134]. Our own work, with pregnant mice injected intravenously with a single dose of AQP4 antibody isolated from a patient with active NMO, suggests a titer-dependent effect of maternal AQP4-IgG on offspring (S. Mader *et al.*, unpublished). At high titers maternal AQP4-IgG impairs the survival of offspring and at lower titers AQP4 IgG can affect the offspring's brain.

Concluding Remarks

Classical roles for antibodies are to assist in cellular debris removal, to eradicate harmful pathogens, and to neutralize toxins. For the latter two functions especially, a diverse

repertoire is required. Although it is clear that antibodies can be responsible for significant brain pathology, we have raised the hypothesis before [3] that negative selection for brain antigens might be deleterious, leaving the host with too narrow an antibody diversity and a diminished ability to protect effectively against infections and toxins. It is notable that diversification of the B cell repertoire occurs after the BBB is formed, limiting the exposure of developing B cells to brain antigens (see Outstanding Questions). This hypothesis predicts that all individuals may develop brain-reactive antibodies as part of a protective immune response and that the BBB serves two important functions. First, it sequesters brain antigens and limits their contribution to negative selection of B cells. Second, it protects the brain whenever anti-brain antibodies are made. We therefore speculate that anti-brain antibodies may be commonly present in healthy individuals. The purging of the immature B cell repertoire of autoreactive cells occurs in the bone marrow and spleen after the BBB has been formed. All mechanisms of B cell tolerance that we understand to date require that antigen be present and trigger B cell receptor (BCR)-mediated tolerance mechanisms. It is possible, therefore, that many brain-reactive B cells mature to immunocompetence. Usually, these B cells may be of no consequence. Even if they are activated, possibly through cross reactivity with microbial antigens as has been demonstrated for B cells cross reactive with *Streptococcus* and the dopamine receptor [6,7], the antibodies are not able to bind to the brain antigen providing the BBB retains its impermeability to antigen. If, however, the integrity of the BBB is compromised, these antibodies can contribute to alterations in brain function.

Outstanding Questions

What mechanisms regulate the integrity of the BBB?

What approaches can be used to assess barrier integrity in a noninvasive manner?

Are there other autoimmune diseases that exhibit antibodies to neuronal antigens? Are there neuronal pathologies or behavioral abnormalities associated with these diseases?

Are there other infectious diseases where brain pathology and behavioral disorders can be associated with autoantibodies?

What renders a brain susceptible to antibody-mediated injury? Under circumstances where barrier integrity is broken, some individuals do not exhibit brain pathology. What features of the tissue microenvironment and immune cell types determine a pathogenic response? What features of the autoantibodies determine a pathogenic response?

Why do some antibodies appear to selectively target cells in the CNS when they are a response to antigen that is also expressed in peripheral tissue?

The increasing recognition of the potentially damaging impact of brain-reactive antibodies on the developing fetal brain and the adult brain requires that we consider therapeutic strategies to protect the brain. Antibody-depletion strategies such as plasmapheresis are impractical as long-term therapy; B cell depletion or blockade of B cell activation is potentially immunosuppressive. A novel, potentially non-immunosuppressive, strategy is to protect or enhance BBB integrity. Most brain-reactive antibodies that cause pathology in

adults appear to enter the brain primarily as soluble molecules; thus, more studies of the mechanisms that regulate the BBB are needed as well as more modalities for noninvasive or minimally invasive assessments of BBB function. Protecting the BBB has the advantage that it does not require knowledge of all pathogenic antigenic specificities.

An alternative strategy might be the use of decoy antigen to neutralize serum antibodies such that they no longer bind to target tissue [135]. The requirement for this strategy is a lack of toxicity or immunogenicity. This approach has been pioneered in *ex vivo* studies but has not yet been demonstrated to show efficacy *in vivo* [135]. Its advantage is that it is less likely to perturb other aspects of physiology, is non-immunosuppressive, and does not require knowledge for each disease of how antibodies penetrate the BBB. It is our hypothesis that decoy antigens might be most useful under conditions of transient production of brain-reactive antibodies, such as during infection.

One important question that has not yet been rigorously addressed is whether all brains are equally vulnerable to antibody-mediated pathology, or what makes some brains more vulnerable, either during fetal development or in adulthood. We would speculate that vulnerability may involve genetic factors as well as antibody exposure or the coexistence of other modulators or stressors of brain cell function or viability, respectively.

Finally, it is interesting to ask whether we might use antibodies to improve brain function. It may be that antibodies could enhance neurotransmitter signaling in conditions characterized by a deficiency in these processes. The same antibodies that have pathogenic effects in individuals with normal brain function might improve brain function in some individuals with perhaps diminished NMDAR or dopamine receptor function. This intriguing possibility awaits further investigation.

Key Table

Table 1

Antibodies Mediate Brain Dysfunction^a

Etiology	Disease	Defined Antigen
Malignancy	Hodgkin's lymphoma	AMPA, mGluR1, mGluR2, and mGluR5, Tr (PCA1) [136]
	SCLC	AMPA, mGluR1, mGluR2, and mGluR5 Amphiphysin/synaptic vesicle GABA _{B1} , CV2/CRMP5, Gephyrin, Hu (ANNA1), Ma, Recoverin, Ri (ANNA2) [137–141]
	Non-SCLC	GAD (GAD65, GAD67) [142]
	Ovary dermoid	NMDAR (NR2A/NR2B) [143]
	Thymoma	AMPA, mGluR1, mGluR2, and mGluR5 GAD (GAD65, GAD67) Caspr2, CV2/CRMP5, Gephyrin [141,144]
	Breast	AMPA, mGluR1, mGluR2, and mGluR5 Amphiphysin/synaptic vesicle, Hu (ANNA1), Ma, Ri (ANNA2), Yo (PCA1), Zic4 (PCA1) [141,145]
	Thymic carcinoma	AMPA, mGluR1, mGluR2, and mGluR5, Ri (ANNA2) [141,146]

Etiology	Disease	Defined Antigen	
	Endometrial carcinoma (rare)	Caspr2 [144]	
	Teratoma	NMDAR (NR2A/NR2B) [141]	
	Renal carcinoma	CV2/CRMP5	
	Pancreatic carcinoma	GAD (GAD65, GAD67) Gephyrin [142]	
	Prostate	Hu (ANNA1) [147]	
	Ovary	Hu (ANNA1), Ri (ANNA2), Yo (PCA1), Zic4 (PCA1) [148]	
	Bladder	Hu (ANNA1) [149]	
	Germ cell (testis)	Ma [150]	
Infection	Post-streptococcal movement disorders, Sydenham's chorea, and PANDAS	Lysoganglioside Dopamine D1 and D2 receptors [6,7,151]	
Autoimmunity (antibodies known to cause disease)	NPSLE	NR2A/NR2B [50] Neuronal surface P antigen [70]	
	NMO	AQP4 [76,77]	
	ADEM	MOG [152]	
	Limbic encephalitis	AMPA (GluR1, GluR2) [141] NMDAR (NR1/NR2B) [153,154]	
	Rasmussen encephalitis	GluR3 [155]	
	Stiff-person syndrome	GAD, Gephyrin GABA _A , GABA _{B1} [156] Anti-amphiphysin [157]	
	Celiac disease	Synapsin 1 [44] Transglutaminase [158]	
	Autoimmunity (antibodies not 'known to cause disease)	Limbic encephalitis	Lgi1/Caspr2 [144,159,160]
		Hashimoto's encephalitis	Aldehyde reductase, thyroglobulin [45,161]
Autism		LDH, Cypsin, STIP-1, CRMP1, CRMP2, YB-1 [120]	

^aAbbreviations: mGluR, metabotropic glutamate receptor; GABA, γ -aminobutyric acid; GAD, glutamic acid decarboxylase; Caspr2, contactin-associated protein-like 2; CRMP5, collapsin response mediator protein 5; CRMP1/CRMP2, collapsin response mediator protein 1/2; LDH, lactatedehydrogenase; Lgi1, leucine-rich, glioma-inactivated 1; SCLC, small-cell lung cancer; NR1, NR2A, and NR2B, subunits of the NMDAR; MOG, myelin oligodendrocyte glycoprotein; PANDAS, pediatric autoimmune neuropsychiatric disorders associated with streptococcal infections; STIP-1, stress-induced phosphoprotein 1; YB-1, Y-box-binding protein 1.

Acknowledgments

The authors thank Benjamin Obholzer for the illustration. The research was funded by the NIAID, Department of Defense AR130137, and The Simons Foundation. L.B. is a recipient of a Brain and Behavior NARSAD Young Investigator Foundation Grant. S.M. is a recipient of a SLE Lupus Foundation Fellowship.

References

1. Mazina V, et al. Epigenetics of autism-related impairment: copy number variation and maternal infection. *J Dev Behav Pediatr.* 2015; 36:61–67. [PubMed: 25629966]
2. Rivest S. Regulation of innate immune responses in the brain. *Nat Rev Immunol.* 2009; 9:429–439. [PubMed: 19461673]

3. Diamond B, et al. Brain-reactive antibodies and disease. *Annu Rev Immunol.* 2013; 31:345–385. [PubMed: 23516983]
4. Deverman BE, Patterson PH. Cytokines and CNS development. *Neuron.* 2009; 64:61–78. [PubMed: 19840550]
5. Petermann F, Korn T. Cytokines and effector T cell subsets causing autoimmune CNS disease. *FEBS Lett.* 2011; 585:3747–3757. [PubMed: 21477588]
6. Cox CJ, et al. Brain human monoclonal autoantibody from sydenham chorea targets dopaminergic neurons in transgenic mice and signals dopamine D2 receptor: implications in human disease. *J Immunol.* 2013; 191:5524–5541. [PubMed: 24184556]
7. Brimberg L, et al. Behavioral, pharmacological, and immunological abnormalities after streptococcal exposure: a novel rat model of Sydenham chorea and related neuropsychiatric disorders. *Neuropsychopharmacology.* 2012; 37:2076–2087. [PubMed: 22534626]
8. Engelhardt B. Development of the blood–brain barrier. *Cell Tissue Res.* 2003; 314:119–129. [PubMed: 12955493]
9. Engelhardt B. Neuroscience. Blood–brain barrier differentiation. *Science.* 2011; 334:1652–1653. [PubMed: 22194564]
10. Jessen, NA., et al. The glymphatic system: a beginner’s guide. *Neurochem Res.* 2015. Published online May 7, 2015. <http://dx.doi.org/10.1007/s11064-015-1581-6>
11. Louveau A, et al. Structural and functional features of central nervous system lymphatic vessels. *Nature.* 2015; 523:337–341. [PubMed: 26030524]
12. Aspelund A, et al. A dural lymphatic vascular system that drains brain interstitial fluid and macromolecules. *J Exp Med.* 2015; 212:991–999. [PubMed: 26077718]
13. Bauer HC, et al. Neovascularization and the appearance of morphological characteristics of the blood–brain barrier in the embryonic mouse central nervous system. *Brain Res Dev Brain Res.* 1993; 75:269–278. [PubMed: 8261616]
14. Ben-Zvi A, et al. Mfsd2a is critical for the formation and function of the blood–brain barrier. *Nature.* 2014; 509:507–511. [PubMed: 24828040]
15. Braniste V, et al. The gut microbiota influences blood– brain barrier permeability in mice. *Sci Transl Med.* 2014; 6:263ra158.
16. Simister NE. Placental transport of immunoglobulin G. *Vaccine.* 2003; 21:3365–3369. [PubMed: 12850341]
17. Banks WA, et al. Passage of cytokines across the blood– brain barrier. *Neuroimmunomodulation.* 1995; 2:241–248. [PubMed: 8963753]
18. Tsao N, et al. Tumour necrosis factor- α causes an increase in blood–brain barrier permeability during sepsis. *J Med Microbiol.* 2001; 50:812–821. [PubMed: 11549183]
19. Ballabh P, et al. The blood–brain barrier: an overview: structure, regulation, and clinical implications. *Neurobiol Dis.* 2004; 16:1–13. [PubMed: 15207256]
20. Zhang Y, Pardridge WM. Rapid transferrin efflux from brain to blood across the blood–brain barrier. *J Neurochem.* 2001; 76:1597–1600. [PubMed: 11238745]
21. Roopenian DC, Akilesh S. FcRn: the neonatal Fc receptor comes of age. *Nat Rev Immunol.* 2007; 7:715–725. [PubMed: 17703228]
22. Montagne A, et al. Blood–brain barrier breakdown in the aging human hippocampus. *Neuron.* 2015; 85:296–302. [PubMed: 25611508]
23. Methia N, et al. ApoE deficiency compromises the blood brain barrier especially after injury. *Mol Med.* 2001; 7:810–815. [PubMed: 11844869]
24. Hafezi-Moghadam A, et al. ApoE deficiency leads to a progressive age-dependent blood–brain barrier leakage. *Am J Physiol Cell Physiol.* 2007; 292:C1256–C1262. [PubMed: 16870825]
25. Hultman K, et al. The APOE varepsilon4/varepsilon4 genotype potentiates vascular fibrin(ogen) deposition in amyloid-laden vessels in the brains of Alzheimer’s disease patients. *J Cereb Blood Flow Metab.* 2013; 33:1251–1258. [PubMed: 23652625]
26. Cerletti A, et al. Endocytosis and transcytosis of an immunoliposome-based brain drug delivery system. *J Drug Target.* 2000; 8:435–446. [PubMed: 11328669]

27. Kroll S, et al. Control of the blood–brain barrier by glucocorticoids and the cells of the neurovascular unit. *Ann N Y Acad Sci.* 2009; 1165:228–239. [PubMed: 19538311]
28. Gesuete R, et al. Poly-ICLC preconditioning protects the blood–brain barrier against ischemic injury *in vitro* through type I interferon signaling. *J Neurochem.* 2012; 123(Suppl 2):75–85. [PubMed: 23050645]
29. Serres S, et al. Magnetic resonance imaging reveals therapeutic effects of interferon-beta on cytokine-induced reactivation of rat model of multiple sclerosis. *J Cereb Blood Flow Metab.* 2013; 33:744–753. [PubMed: 23423190]
30. Ni C, et al. Interferon-gamma safeguards blood–brain barrier during experimental autoimmune encephalomyelitis. *Am J Pathol.* 2014; 184:3308–3320. [PubMed: 25307346]
31. Veldhuis WB, et al. Interferon-beta prevents cytokine-induced neutrophil infiltration and attenuates blood–brain barrier disruption. *J Cereb Blood Flow Metab.* 2003; 23:1060–1069. [PubMed: 12973022]
32. Niemela J, et al. IFN- β regulates CD73 and adenosine expression at the blood–brain barrier. *Eur J Immunol.* 2008; 38:2718–2726. [PubMed: 18825744]
33. Stone LA, et al. The effect of interferon-beta on blood– brain barrier disruptions demonstrated by contrast-enhanced magnetic resonance imaging in relapsing–remitting multiple sclerosis. *Ann Neurol.* 1995; 37:611–619. [PubMed: 7755356]
34. Kowal C, et al. Human lupus autoantibodies against NMDA receptors mediate cognitive impairment. *Proc Natl Acad Sci USA.* 2006; 103:19854–19859. [PubMed: 17170137]
35. Kowal C, et al. Cognition and immunity; antibody impairs memory. *Immunity.* 2004; 21:179–188. [PubMed: 15308099]
36. Huerta PT, et al. Immunity and behavior: antibodies alter emotion. *Proc Natl Acad Sci USA.* 2006; 103:678–683. [PubMed: 16407105]
37. Mallard C. Innate immune regulation by toll-like receptors in the brain. *ISRN Neurol.* 2012; 2012:701950. [PubMed: 23097717]
38. Tuor UI, et al. Functional magnetic resonance imaging of tonic pain and vasopressor effects in rats. *Magn Reson Imaging.* 2002; 20:707–712. [PubMed: 12591566]
39. Abbott NJ. Evidence for bulk flow of brain interstitial fluid: significance for physiology and pathology. *Neurochem Int.* 2004; 45:545–552. [PubMed: 15186921]
40. Roth J, et al. Signaling the brain in systemic inflammation: role of sensory circumventricular organs. *Front Biosci.* 2004; 9:290–300. [PubMed: 14766367]
41. Kabat EA, et al. Quantitative estimation of the albumin and gamma globulin in normal and pathologic cerebrospinal fluid by immunochemical methods. *Am J Med.* 1948; 4:653–662. [PubMed: 18856761]
42. Serafini B, et al. Detection of ectopic B-cell follicles with germinal centers in the meninges of patients with secondary progressive multiple sclerosis. *Brain Pathol.* 2004; 14:164–174. [PubMed: 15193029]
43. Solimena M, et al. Autoantibodies to glutamic acid decarboxylase in a patient with stiff-man syndrome, epilepsy, and type I diabetes mellitus. *N Engl J Med.* 1988; 318:1012–1020. [PubMed: 3281011]
44. Alaedini A, et al. Immune cross-reactivity in celiac disease: anti-gliadin antibodies bind to neuronal synapsin I. *J Immunol.* 2007; 178:6590–6595. [PubMed: 17475890]
45. Gini B, et al. Novel autoantigens recognized by CSF IgG from Hashimoto’s encephalitis revealed by a proteomic approach. *J Neuroimmunol.* 2008; 196:153–158. [PubMed: 18407358]
46. Nashi E, et al. The role of B cells in lupus pathogenesis. *Int J Biochem Cell Biol.* 2010; 42:543–550. [PubMed: 19850148]
47. Bradl M, et al. Neuromyelitis optica: pathogenicity of patient immunoglobulin *in vivo*. *Ann Neurol.* 2009; 66:630–643. [PubMed: 19937948]
48. Bravo-Zehnder M, et al. Anti-ribosomal P protein autoantibodies from patients with neuropsychiatric lupus impair memory in mice. *Arthritis Rheumatol.* 2015; 67:204–214. [PubMed: 25302407]
49. Hahn BH. Antibodies to DNA. *N Engl J Med.* 1998; 338:1359–1368. [PubMed: 9571257]

50. DeGiorgio LA, et al. A subset of lupus anti-DNA antibodies cross-reacts with the NR2 glutamate receptor in systemic lupus erythematosus. *Nat Med.* 2001; 7:1189–1193. [PubMed: 11689882]
51. Gaynor B, et al. Peptide inhibition of glomerular deposition of an anti-DNA antibody. *Proc Natl Acad Sci USA.* 1997; 94:1955–1960. [PubMed: 9050886]
52. Faust TW, et al. Neurotoxic lupus autoantibodies alter brain function through two distinct mechanisms. *Proc Natl Acad Sci USA.* 2010; 107:18569–18574. [PubMed: 20921396]
53. Vo A, et al. Regional brain metabolism in a murine systemic lupus erythematosus model. *J Cereb Blood Flow Metab.* 2014; 34:1315–1320. [PubMed: 24824914]
54. Mackay M, et al. Brain metabolism and autoantibody titres predict functional impairment in systemic lupus erythematosus. *Lupus Sci Med.* 2015; 2:e000074. [PubMed: 25861456]
55. Chang EBV, et al. Selective impairment of spatial cognition caused by autoantibodies to the *N*-methyl-D-aspartate receptor. *EBioMedicine.* 2015; 2:753–762.
56. Lapteva L, et al. Anti-*N*-methyl-D-aspartate receptor antibodies, cognitive dysfunction, and depression in systemic lupus erythematosus. *Arthritis Rheum.* 2006; 54:2505–2514. [PubMed: 16868971]
57. Omdal R, et al. Neuropsychiatric disturbances in SLE are associated with antibodies against NMDA receptors. *Eur J Neurol.* 2005; 12:392–398. [PubMed: 15804272]
58. Hanly JG, et al. Autoantibodies and neuropsychiatric events at the time of systemic lupus erythematosus diagnosis: results from an international inception cohort study. *Arthritis Rheum.* 2008; 58:843–853. [PubMed: 18311802]
59. Harrison MJ, et al. Relationship between serum NR2a antibodies and cognitive dysfunction in systemic lupus erythematosus. *Arthritis Rheum.* 2006; 54:2515–2522. [PubMed: 16868972]
60. Husebye ES, et al. Autoantibodies to a NR2A peptide of the glutamate/NMDA receptor in sera of patients with systemic lupus erythematosus. *Ann Rheum Dis.* 2005; 64:1210–1213. [PubMed: 15708887]
61. Kozora E, et al. Antibodies against *N*-methyl-D-aspartate receptors in patients with systemic lupus erythematosus without major neuropsychiatric syndromes. *J Neurol Sci.* 2010; 295:87–91. [PubMed: 20546792]
62. Petri M, et al. Depression and cognitive impairment in newly diagnosed systemic lupus erythematosus. *J Rheumatol.* 2010; 37:2032–2038. [PubMed: 20634244]
63. Arinuma Y, et al. Association of cerebrospinal fluid anti- NR2 glutamate receptor antibodies with diffuse neuropsychiatric systemic lupus erythematosus. *Arthritis Rheum.* 2008; 58:1130–1135. [PubMed: 18383393]
64. Hirohata S, et al. Blood–brain barrier damages and intrathecal synthesis of anti-*N*-methyl-D-aspartate receptor NR2 antibodies in diffuse psychiatric/neuropsychological syndromes in systemic lupus erythematosus. *Arthritis Res Ther.* 2014; 16:R77. [PubMed: 24655341]
65. Yoshio T, et al. IgG anti-NR2 glutamate receptor autoantibodies from patients with systemic lupus erythematosus activate endothelial cells. *Arthritis Rheum.* 2013; 65:457–463. [PubMed: 23055186]
66. Matus S, et al. Antiribosomal-P autoantibodies from psychiatric lupus target a novel neuronal surface protein causing calcium influx and apoptosis. *J Exp Med.* 2007; 204:3221–3234. [PubMed: 18056288]
67. Elkon KB, et al. Lupus autoantibodies target ribosomal P proteins. *J Exp Med.* 1985; 162:459–471. [PubMed: 2410526]
68. Katzav A, et al. Anti-P ribosomal antibodies induce defect in smell capability in a model of CNS-SLE (depression). *J Autoimmun.* 2008; 31:393–398. [PubMed: 18947972]
69. Katzav A, et al. Induction of autoimmune depression in mice by anti-ribosomal P antibodies via the limbic system. *Arthritis Rheum.* 2007; 56:938–948. [PubMed: 17328071]
70. Segovia-Miranda F, et al. Pathogenicity of lupus antiribosomal P antibodies: role of cross-reacting neuronal surface P antigen in glutamatergic transmission and plasticity in a mouse model. *Arthritis Rheumatol.* 2015; 67:1598–1610. [PubMed: 25709106]
71. Bonfa E, et al. Association between lupus psychosis and anti-ribosomal P protein antibodies. *N Engl J Med.* 1987; 317:265–271. [PubMed: 3496538]

72. Isshi K, Hirohata S. Association of anti-ribosomal P protein antibodies with neuropsychiatric systemic lupus erythematosus. *Arthritis Rheum.* 1996; 39:1483–1490. [PubMed: 8814059]
73. Nagai T, et al. Anti-ribosomal P protein antibody induces Th1 responses by enhancing the production of IL-12 in activated monocytes. *Mod Rheumatol.* 2011; 21:57–62. [PubMed: 20824297]
74. Madaio MP. Lupus autoantibodies 101: one size does not fit all; however, specificity influences pathogenicity. *Clin Exp Immunol.* 2003; 131:396–397. [PubMed: 12605690]
75. Hadjivassiliou M, et al. The humoral response in the pathogenesis of gluten ataxia. *Neurology.* 2002; 58:1221–1226. [PubMed: 11971090]
76. Lennon VA, et al. A serum autoantibody marker of neuromyelitis optica: distinction from multiple sclerosis. *Lancet.* 2004; 364:2106–2112. [PubMed: 15589308]
77. Lennon VA, et al. IgG marker of optic–spinal multiple sclerosis binds to the aquaporin-4 water channel. *J Exp Med.* 2005; 202:473–477. [PubMed: 16087714]
78. Roemer SF, et al. Pattern-specific loss of aquaporin-4 immunoreactivity distinguishes neuromyelitis optica from multiple sclerosis. *Brain.* 2007; 130:1194–1205. [PubMed: 17282996]
79. Sorensen A, et al. Astrocytes, but not olfactory ensheathing cells or Schwann cells, promote myelination of CNS axons *in vitro*. *Glia.* 2008; 56:750–763. [PubMed: 18293402]
80. Marignier R, et al. Oligodendrocytes are damaged by neuromyelitis optica immunoglobulin G via astrocyte injury. *Brain.* 2010; 133:2578–2591. [PubMed: 20688809]
81. Palace J, et al. Interferon beta treatment in neuromyelitis optica: increase in relapses and aquaporin 4 antibody titers. *Arch Neurol.* 2010; 67:1016–1017. [PubMed: 20697055]
82. Wingerchuk DM, et al. International consensus diagnostic criteria for neuromyelitis optica spectrum disorders. *Neurology.* 2015; 85:177–189. [PubMed: 26092914]
83. Wingerchuk DM, et al. Revised diagnostic criteria for neuromyelitis optica. *Neurology.* 2006; 66:1485–1489. [PubMed: 16717206]
84. Waters P, et al. Aquaporin-4 antibodies in neuromyelitis optica and longitudinally extensive transverse myelitis. *Arch Neurol.* 2008; 65:913–919. [PubMed: 18625857]
85. Waters PJ, et al. Serologic diagnosis of NMO: a multi-center comparison of aquaporin-4-IgG assays. *Neurology.* 2012; 78:665–671. discussion 669. [PubMed: 22302543]
86. Marignier R, et al. Aquaporin-4 antibody-negative neuromyelitis optica: distinct assay sensitivity-dependent entity. *Neurology.* 2013; 80:2194–2200. [PubMed: 23658379]
87. Takahashi T, et al. Anti-aquaporin-4 antibody is involved in the pathogenesis of NMO: a study on antibody titre. *Brain.* 2007; 130:1235–1243. [PubMed: 17449477]
88. Mader S, et al. Patterns of antibody binding to aquaporin- 4 isoforms in neuromyelitis optica. *PLoS ONE.* 2010; 5:e10455. [PubMed: 20463974]
89. Jarius S, Wildemann B. The history of neuromyelitis optica. *J Neuroinflammation.* 2013; 10:8. [PubMed: 23320783]
90. Kim HJ, et al. MRI characteristics of neuromyelitis optica spectrum disorder: an international update. *Neurology.* 2015; 84:1165–1173. [PubMed: 25695963]
91. Saji E, et al. Cognitive impairment and cortical degeneration in neuromyelitis optica. *Ann Neurol.* 2013; 73:65–76. [PubMed: 23378324]
92. Nishiyama S, et al. A case of NMO seropositive for aquaporin-4 antibody more than 10 years before onset. *Neurology.* 2009; 72:1960–1961. [PubMed: 19487655]
93. Sabater L, et al. Cytotoxic effect of neuromyelitis optica antibody (NMO-IgG) to astrocytes: an *in vitro* study. *J Neuroimmunol.* 2009; 215:31–35. [PubMed: 19695715]
94. Pohl M, et al. Pathogenic T cell responses against aquaporin 4. *Acta Neuropathol.* 2011; 122:21–34. [PubMed: 21468722]
95. Mader S, et al. Complement activating antibodies to myelin oligodendrocyte glycoprotein in neuromyelitis optica and related disorders. *J Neuroinflammation.* 2011; 8:184. [PubMed: 22204662]
96. Bennett JL, et al. Intrathecal pathogenic anti-aquaporin-4 antibodies in early neuromyelitis optica. *Ann Neurol.* 2009; 66:617–629. [PubMed: 19938104]

97. Saadoun S, et al. Intra-cerebral injection of neuromyelitis optica immunoglobulin G and human complement produces neuromyelitis optica lesions in mice. *Brain*. 2010; 133:349–361. [PubMed: 20047900]
98. Misu T, et al. Presence of six different lesion types suggests diverse mechanisms of tissue injury in neuromyelitis optica. *Acta Neuropathol*. 2013; 125:815–827. [PubMed: 23579868]
99. Kowarik MC, et al. The cerebrospinal fluid immunoglobulin transcriptome and proteome in neuromyelitis optica reveals central nervous system-specific B cell populations. *J Neuroinflammation*. 2015; 12:19. [PubMed: 25626447]
100. Chihara N, et al. Plasmablasts as migratory IgG-producing cells in the pathogenesis of neuromyelitis optica. *PLoS ONE*. 2013; 8:e83036. [PubMed: 24340077]
101. Pohl M, et al. T cell-activation in neuromyelitis optica lesions plays a role in their formation. *Acta Neuropathol Commun*. 2013; 1:85. [PubMed: 24367907]
102. Jones MV, et al. Pathogenic aquaporin-4 reactive T cells are sufficient to induce mouse model of neuromyelitis optica. *Acta Neuropathol Commun*. 2015; 3:28. [PubMed: 25990016]
103. Kinoshita M, et al. Neuromyelitis optica: passive transfer to rats by human immunoglobulin. *Biochem Biophys Res Commun*. 2009; 386:623–627. [PubMed: 19545538]
104. Kitic M, et al. Intrastratial injection of interleukin-1 beta triggers the formation of neuromyelitis optica-like lesions in NMO-IgG seropositive rats. *Acta Neuropathol Commun*. 2013; 1:5. [PubMed: 24252536]
105. Bradl M, Lassmann H. Experimental models of neuromyelitis optica. *Brain Pathol*. 2014; 24:74–82. [PubMed: 24345221]
106. Palmeira P, et al. IgG placental transfer in healthy and pathological pregnancies. *Clin Dev Immunol*. 2012; 2012:985646. [PubMed: 22235228]
107. Singalavanija S, et al. Neonatal lupus erythematosus: a 20-year retrospective study. *J Med Assoc Thai*. 2014; 97(Suppl 6):S74–S82. [PubMed: 25391176]
108. Hacoheh Y, et al. Fetal acetylcholine receptor inactivation syndrome: a myopathy due to maternal antibodies. *Neurol Neuroimmunol Neuroinflamm*. 2015; 2:e57. [PubMed: 25566546]
109. Vinet E, et al. Neurodevelopmental disorders in children born to mothers with systemic lupus erythematosus. *Lupus*. 2014; 23:1099–1104. [PubMed: 24969080]
110. Lahita RG. Systemic lupus erythematosus: learning disability in the male offspring of female patients and relationship to laterality. *Psychoneuroendocrinology*. 1988; 13:385–396. [PubMed: 3205905]
111. McAllister DL, et al. The influence of systemic lupus erythematosus on fetal development: cognitive, behavioral, and health trends. *J Int Neuropsychol Soc*. 1997; 3:370–376. [PubMed: 9260446]
112. Ross G, et al. Effects of mothers' autoimmune disease during pregnancy on learning disabilities and hand preference in their children. *Arch Pediatr Adolesc Med*. 2003; 157:397–402. [PubMed: 12695238]
113. Urowitz MB, et al. Neurocognitive abnormalities in offspring of mothers with systemic lupus erythematosus. *Lupus*. 2008; 17:555–560. [PubMed: 18539709]
114. Comi AM, et al. Familial clustering of autoimmune disorders and evaluation of medical risk factors in autism. *J Child Neurol*. 1999; 14:388–394. [PubMed: 10385847]
115. Lee JY, et al. Neurotoxic autoantibodies mediate congenital cortical impairment of offspring in maternal lupus. *Nat Med*. 2009; 15:91–96. [PubMed: 19079257]
116. Wang L, et al. Female mouse fetal loss mediated by maternal autoantibody. *J Exp Med*. 2012; 209:1083–1089. [PubMed: 22565825]
117. Vinet E, et al. Increased male-to-female ratio among children born to women with systemic lupus erythematosus: comment on the article by Lockshin et al. *Arthritis Rheum*. 2013; 65:1129. [PubMed: 23335044]
118. Jagota P, et al. Transplacental transfer of NMDA receptor antibodies in an infant with cortical dysplasia. *Neurology*. 2014; 82:1662–1663. [PubMed: 24706012]
119. Brimberg L, et al. Brain-reactive IgG correlates with autoimmunity in mothers of a child with an autism spectrum disorder. *Mol Psychiatry*. 2013; 18:1171–1177. [PubMed: 23958959]

120. Braunschweig D, et al. Autism-specific maternal autoantibodies recognize critical proteins in developing brain. *Transl Psychiatry*. 2013; 3:e277. [PubMed: 23838888]
121. Croen LA, et al. Maternal mid-pregnancy autoantibodies to fetal brain protein: the early markers for autism study. *Biol Psychiatry*. 2008; 64:583–588. [PubMed: 18571628]
122. Zimmerman AW, et al. Maternal antibrain antibodies in autism. *Brain Behav Immun*. 2007; 21:351–357. [PubMed: 17029701]
123. Singer HS, et al. Prenatal exposure to antibodies from mothers of children with autism produces neurobehavioral alterations: a pregnant dam mouse model. *J Neuroimmunol*. 2009; 211:39–48. [PubMed: 19362378]
124. Bauman MD, et al. Maternal antibodies from mothers of children with autism alter brain growth and social behavior development in the rhesus monkey. *Transl Psychiatry*. 2013; 3:e278. [PubMed: 23838889]
125. Dalton P, et al. Maternal neuronal antibodies associated with autism and a language disorder. *Ann Neurol*. 2003; 53:533–537. [PubMed: 12666123]
126. Martin LA, et al. Stereotypies and hyperactivity in rhesus monkeys exposed to IgG from mothers of children with autism. *Brain Behav Immun*. 2008; 22:806–816. [PubMed: 18262386]
127. Braunschweig D, et al. Maternal autism-associated IgG antibodies delay development and produce anxiety in a mouse gestational transfer model. *J Neuroimmunol*. 2012; 252:56–65. [PubMed: 22951357]
128. Camacho J, et al. Embryonic intraventricular exposure to autism-specific maternal autoantibodies produces alterations in autistic-like stereotypical behaviors in offspring mice. *Behav Brain Res*. 2014; 266:46–51. [PubMed: 24613242]
129. Martinez-Cerdeno, V., et al. Prenatal exposure to autism-specific maternal autoantibodies alters proliferation of cortical neural precursor cells, enlarges brain, and increases neuronal size in adult animals. *Cereb Cortex*. 2014. Published online December 22, 2014. <http://dx.doi.org/10.1007/10.1093/cercor/bhu291>
130. Atladottir HO, et al. Association of family history of autoimmune diseases and autism spectrum disorders. *Pediatrics*. 2009; 124:687–694. [PubMed: 19581261]
131. Braunschweig D, et al. Behavioral correlates of maternal antibody status among children with autism. *J Autism Dev Disord*. 2012; 42:1435–1445. [PubMed: 22012245]
132. Saadoun S, et al. Neuromyelitis optica IgG causes placental inflammation and fetal death. *J Immunol*. 2013; 191:2999–3005. [PubMed: 23935196]
133. Igel C, et al. Neuromyelitis optica in pregnancy complicated by posterior reversible encephalopathy syndrome, eclampsia and fetal death. *J Clin Med Res*. 2015; 7:193–195. [PubMed: 25584107]
134. Reuss R, et al. A woman with acute myelopathy in pregnancy: case outcome. *BMJ*. 2009; 339:b4026. [PubMed: 20007656]
135. Bloom O, et al. Generation of a unique small molecule peptidomimetic that neutralizes lupus autoantibody activity. *Proc Natl Acad Sci USA*. 2011; 108:10255–10259. [PubMed: 21646518]
136. Shams'ili S, et al. Paraneoplastic cerebellar degeneration associated with antineuronal antibodies: analysis of 50 patients. *Brain*. 2003; 126:1409–1418. [PubMed: 12764061]
137. Graus F, et al. Anti-Hu antibodies in patients with small-cell lung cancer: association with complete response to therapy and improved survival. *J Clin Oncol*. 1997; 15:2866–2872. [PubMed: 9256130]
138. Dogan Onugoren M, et al. Limbic encephalitis due to GABA_B and AMPA receptor antibodies: a case series. *J Neurol Neurosurg Psychiatry*. 2015; 86:965–972. [PubMed: 25300449]
139. Gozzard P, et al. Paraneoplastic neurologic disorders in small cell lung carcinoma: a prospective study. *Neurology*. 2015; 85:235–239. [PubMed: 26109714]
140. Orange D, et al. Cellular immune suppression in paraneoplastic neurologic syndromes targeting intracellular antigens. *Arch Neurol*. 2012; 69:1132–1140. [PubMed: 22566506]
141. Lai M, et al. AMPA receptor antibodies in limbic encephalitis alter synaptic receptor location. *Ann Neurol*. 2009; 65:424–434. [PubMed: 19338055]

142. Saiz A, et al. Spectrum of neurological syndromes associated with glutamic acid decarboxylase antibodies: diagnostic clues for this association. *Brain*. 2008; 131:2553–2563. [PubMed: 18687732]
143. Dalmau J, et al. Clinical experience and laboratory investigations in patients with anti-NMDAR encephalitis. *Lancet Neurol*. 2011; 10:63–74. [PubMed: 21163445]
144. Irani SR, et al. Antibodies to K_v1 potassium channel-complex proteins leucine-rich, glioma inactivated 1 protein and contactin-associated protein-2 in limbic encephalitis, Morvan's syndrome and acquired neuromyotonia. *Brain*. 2010; 133:2734–2748. [PubMed: 20663977]
145. Murinson BB, Guarnaccia JB. Stiff-person syndrome with amphiphysin antibodies: distinctive features of a rare disease. *Neurology*. 2008; 71:1955–1958. [PubMed: 18971449]
146. Kastrup O, et al. Atypical paraneoplastic brainstem encephalitis associated with anti-Ri-antibodies due to thymic carcinoma with possible clinical response to immunoglobulins. *Eur Neurol*. 2001; 45:285–287. [PubMed: 11385271]
147. Graus F, et al. Anti-Hu-associated paraneoplastic encephalomyelitis: analysis of 200 patients. *Brain*. 2001; 124:1138–1148. [PubMed: 11353730]
148. Monstad SE, et al. Yo antibodies in ovarian and breast cancer patients detected by a sensitive immunoprecipitation technique. *Clin Exp Immunol*. 2006; 144:53–58. [PubMed: 16542365]
149. Lukacs S, et al. Rare association of anti-Hu antibody positive paraneoplastic neurological syndrome and transitional cell bladder carcinoma. *Case Rep Urol*. 2012; 2012:724940. [PubMed: 23320243]
150. Yamamoto T, Tsuji S. Anti-Ma2-associated encephalitis and paraneoplastic limbic encephalitis. *Brain Nerve*. 2010; 62:838–851. (in Japanese). [PubMed: 20714032]
151. Kirvan CA, et al. Mimicry and autoantibody-mediated neuronal cell signaling in Sydenham chorea. *Nat Med*. 2003; 9:914–920. [PubMed: 12819778]
152. O'Connor KC, et al. Self-antigen tetramers discriminate between myelin autoantibodies to native or denatured protein. *Nat Med*. 2007; 13:211–217. [PubMed: 17237795]
153. Pleasure D. Diagnostic and pathogenic significance of glutamate receptor autoantibodies. *Arch Neurol*. 2008; 65:589–592. [PubMed: 18474732]
154. Hughes EG, et al. Cellular and synaptic mechanisms of anti-NMDA receptor encephalitis. *J Neurosci*. 2010; 30:5866–5875. [PubMed: 20427647]
155. Cohen-Kashi Malina K, et al. Autoantibodies against an extracellular peptide of the GluR3 subtype of AMPA receptors activate both homomeric and heteromeric AMPA receptor channels. *Neurochem Res*. 2006; 31:1181–1190. [PubMed: 16967334]
156. Dalakas MC, et al. The clinical spectrum of anti-GAD antibody-positive patients with stiff-person syndrome. *Neurology*. 2000; 55:1531–1535. [PubMed: 11094109]
157. Geis C, et al. Stiff person syndrome-associated autoantibodies to amphiphysin mediate reduced GABAergic inhibition. *Brain*. 2010; 133:3166–3180. [PubMed: 20884644]
158. Hadjivassiliou M, et al. Autoantibody targeting of brain and intestinal transglutaminase in gluten ataxia. *Neurology*. 2006; 66:373–377. [PubMed: 16476935]
159. Lai M, et al. Investigation of LGI1 as the antigen in limbic encephalitis previously attributed to potassium channels: a case series. *Lancet Neurol*. 2010; 9:776–785. [PubMed: 20580615]
160. Lancaster E, et al. Investigations of caspr2, an autoantigen of encephalitis and neuromyotonia. *Ann Neurol*. 2011; 69:303–311. [PubMed: 21387375]
161. Schiess N, Pardo CA. Hashimoto's encephalopathy. *Ann N Y Acad Sci*. 2008; 1142:254–265. [PubMed: 18990131]

Trends

Brain-reactive antibodies can arise as a result of autoimmune disease or malignancy or as an untoward consequence of an antimicrobial response.

Maternal antibodies can transfer through the placenta to the developing brain. Consequently, brain-reactive maternal antibodies can affect the developing brain with long-term consequences.

The regional specificity of blood–brain barrier compromise allows the same circulating antibody to have different effects on brain function depending on the region of exposure to the antibody.

Antibodies can mediate brain pathology by varied mechanisms including complement activation, cell cytotoxicity, signal transduction, and targeted protein internalization.

Inflammation, dysfunction of microvascular endothelial cells, and aging can result in disruption of barrier integrity, which in turn can allow the influx of antibodies into the brain.

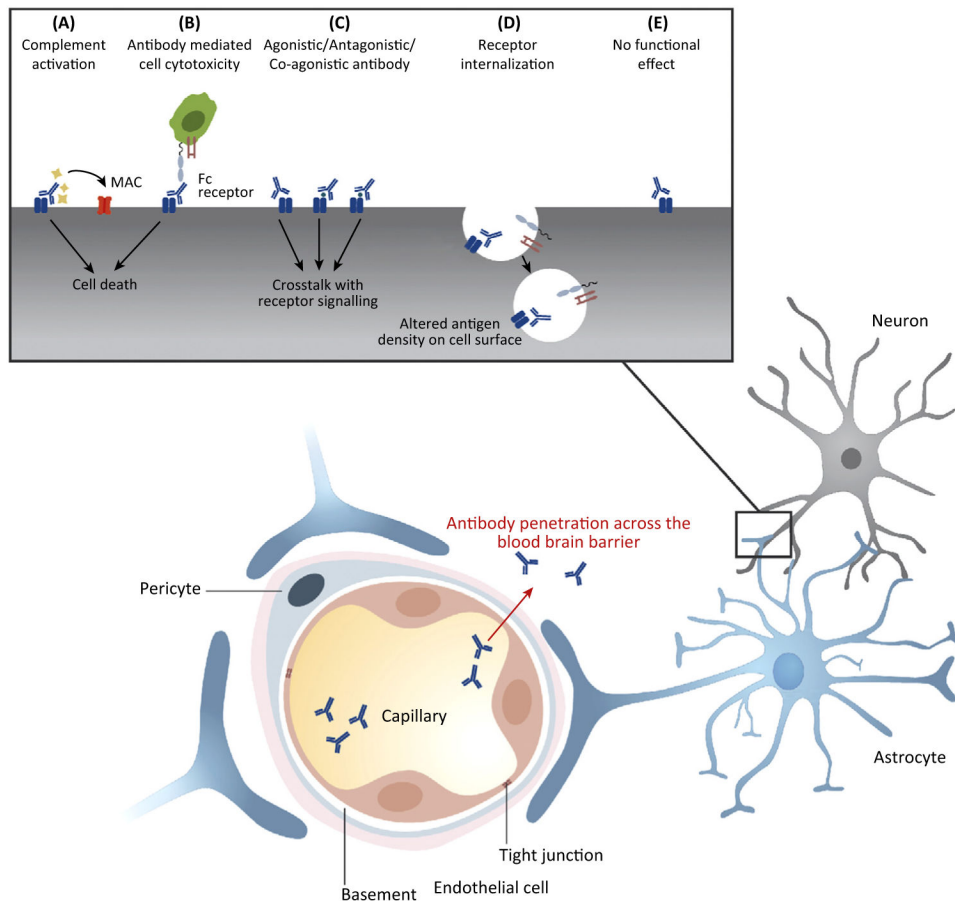


Figure 1. Mechanism of Action of Autoantibodies Penetrating Brain Tissue.

Autoantibodies that bind to cell surface proteins on glial cells or neuronal cells can induce complement-mediated cytotoxicity (CDC), which results in the formation of the membrane attack complex (MAC) (A). By contrast, antibody-dependent cell-mediated cytotoxicity (ADCC) is induced by Fc receptor-bearing effector cells that can lyse antibody-coated target cells (B). CDC and ADCC can result in cell death. Antibodies can interfere with the crosstalk of receptor signaling by acting as agonistic, antagonistic, or co-agonistic antibodies (C). Antibodies can cause receptor internalization following binding of their cell surface antigen, which leads to altered antigen density on the cell surface (D). Some brain-reactive antibodies will have no functional effect (E).